

EMISSION CONTROL PROGRAM

1

NAPA® Echlin® offers more than 1,250 EVAP components for import and domestic applications

2

Echlin® also offers over 600 crankcase and 980 exhaust gas recirculation (EGR) emission components

3

Echlin® Emission Control components are precision engineered and tested for maximum durability and OE-matching performance

**What's in your box?™
Here's what's in ours.**



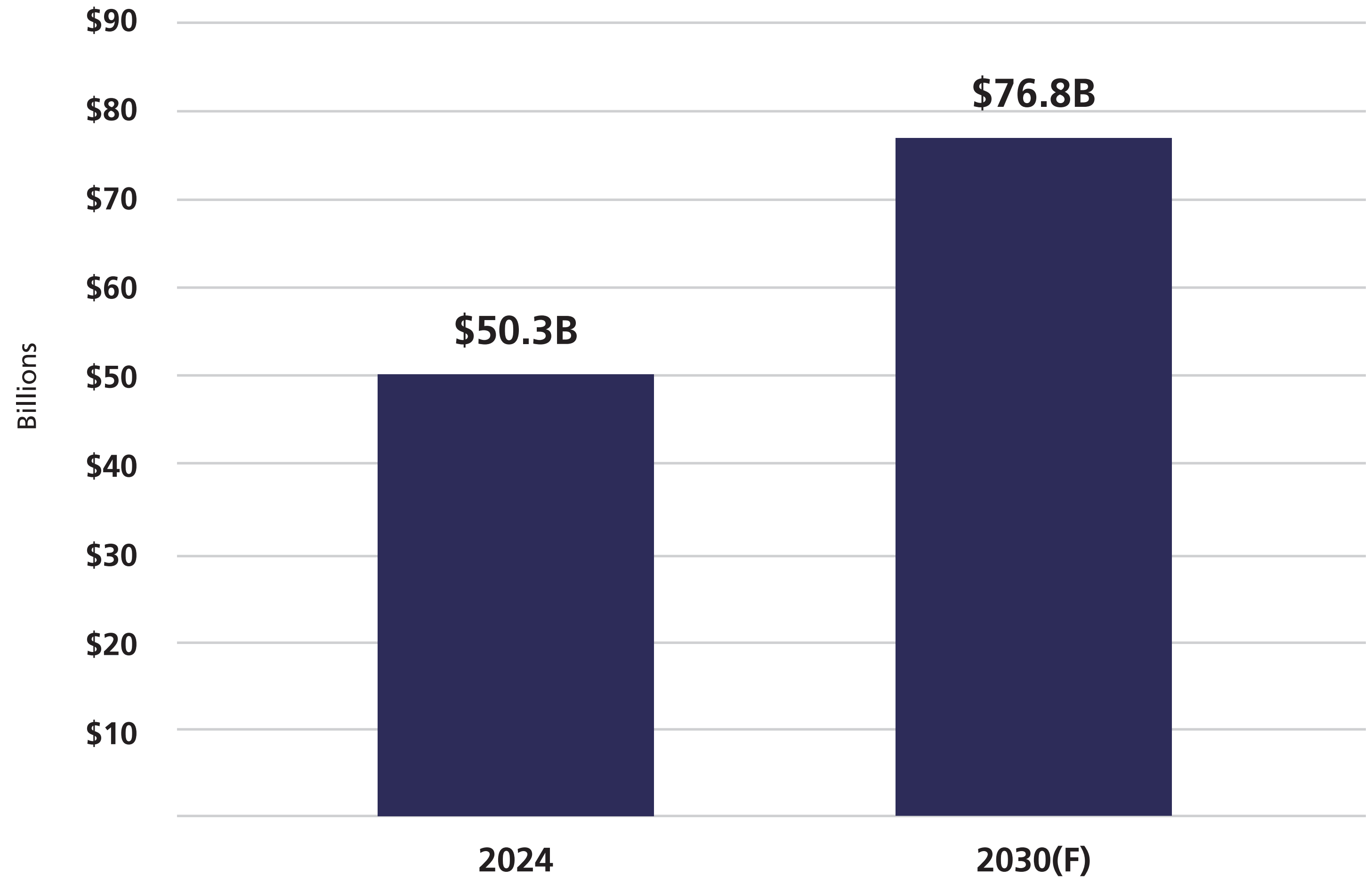
Growing Market

Vehicles on the road today are equipped with multiple emission systems that will require both service and maintenance over their lifetimes. To meet ever-tightening emission Echlins, vehicle manufacturers have gone to great lengths to make internal combustion engines cleaner and more efficient than ever before. These complex systems and additional components will create more and more service opportunities in coming years.

Key Growth Categories:

- EGR Valves
- PCV Valves
- Air Pumps
- Fuel Vapor Canisters

Automotive Emissions Market



Source: Verified Market Reports, 2024



ECHLIN

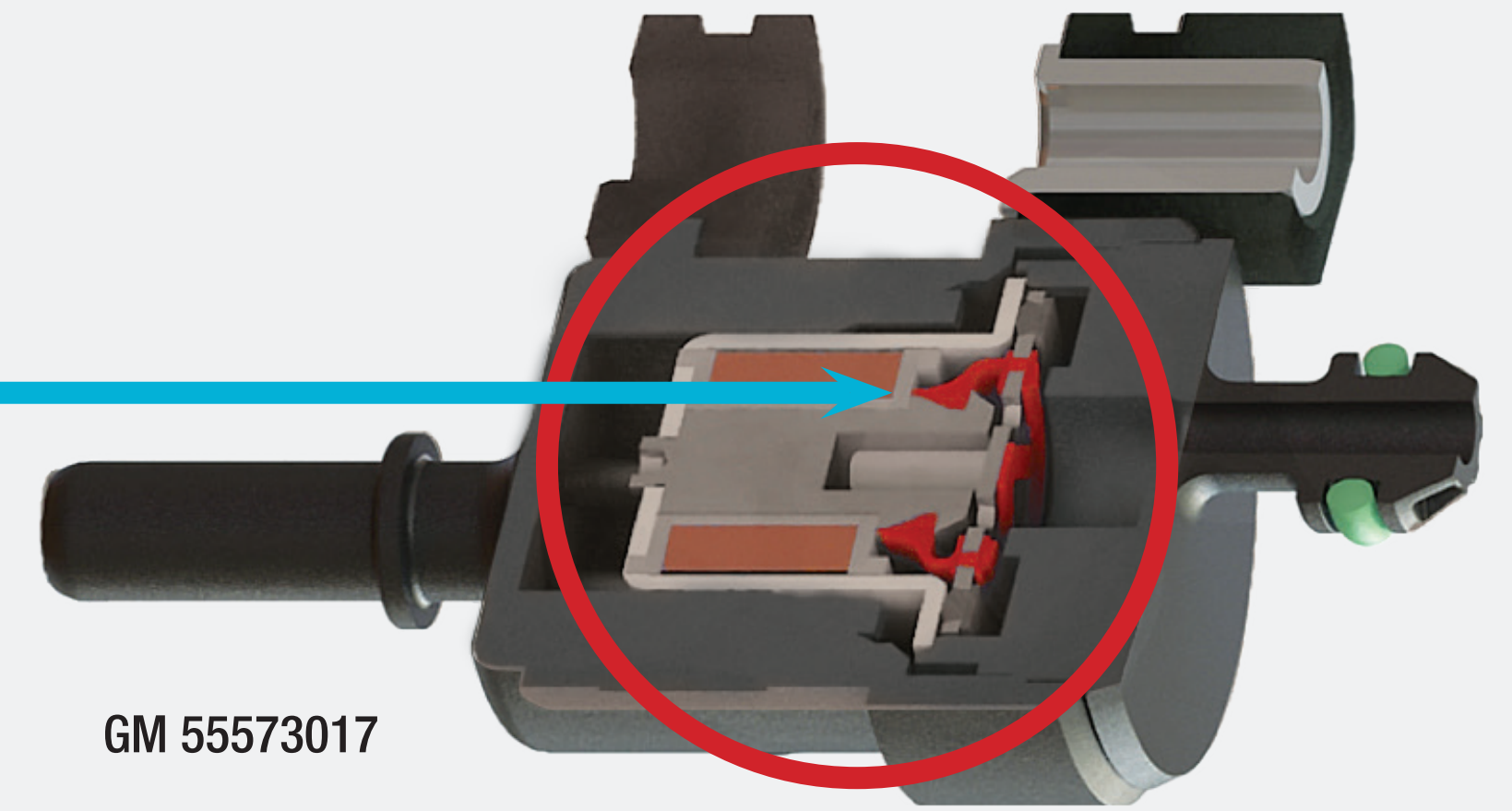
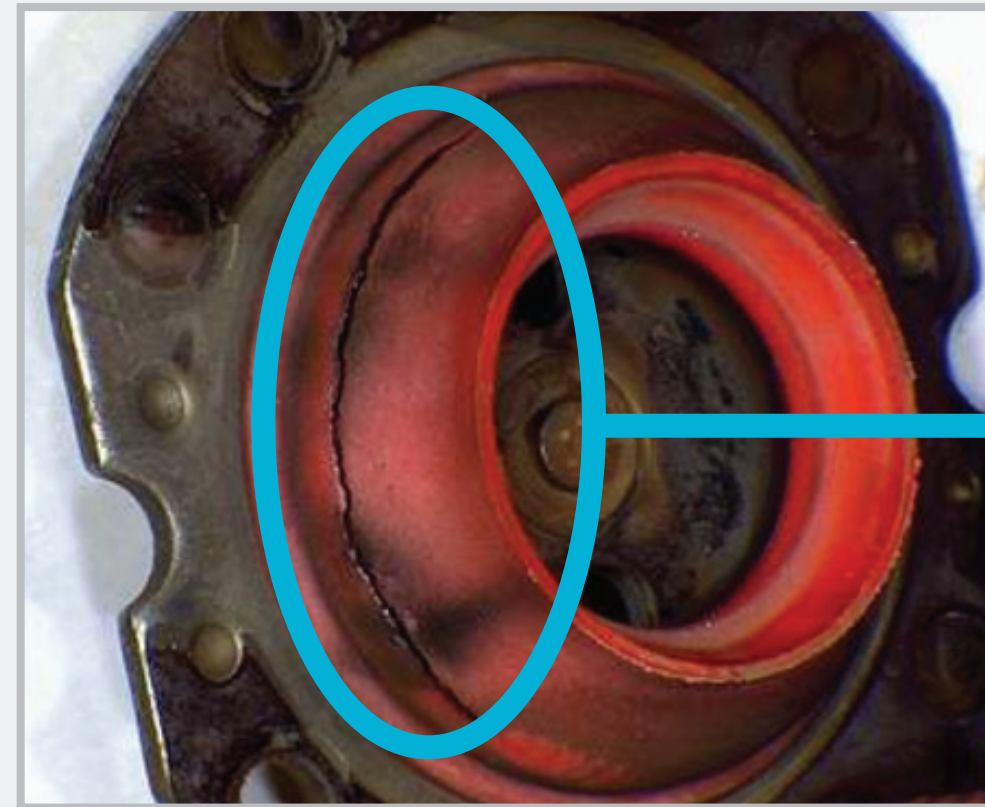
Emission Control Program

NAPAEchlin.com

Opportunities

The purge valves in many popular GM 4- and 6-cylinder vehicles are known for high failure rates. We engineered a more robust component, addressing the weak points in the OE design while maintaining the correct operating specifications of the original.

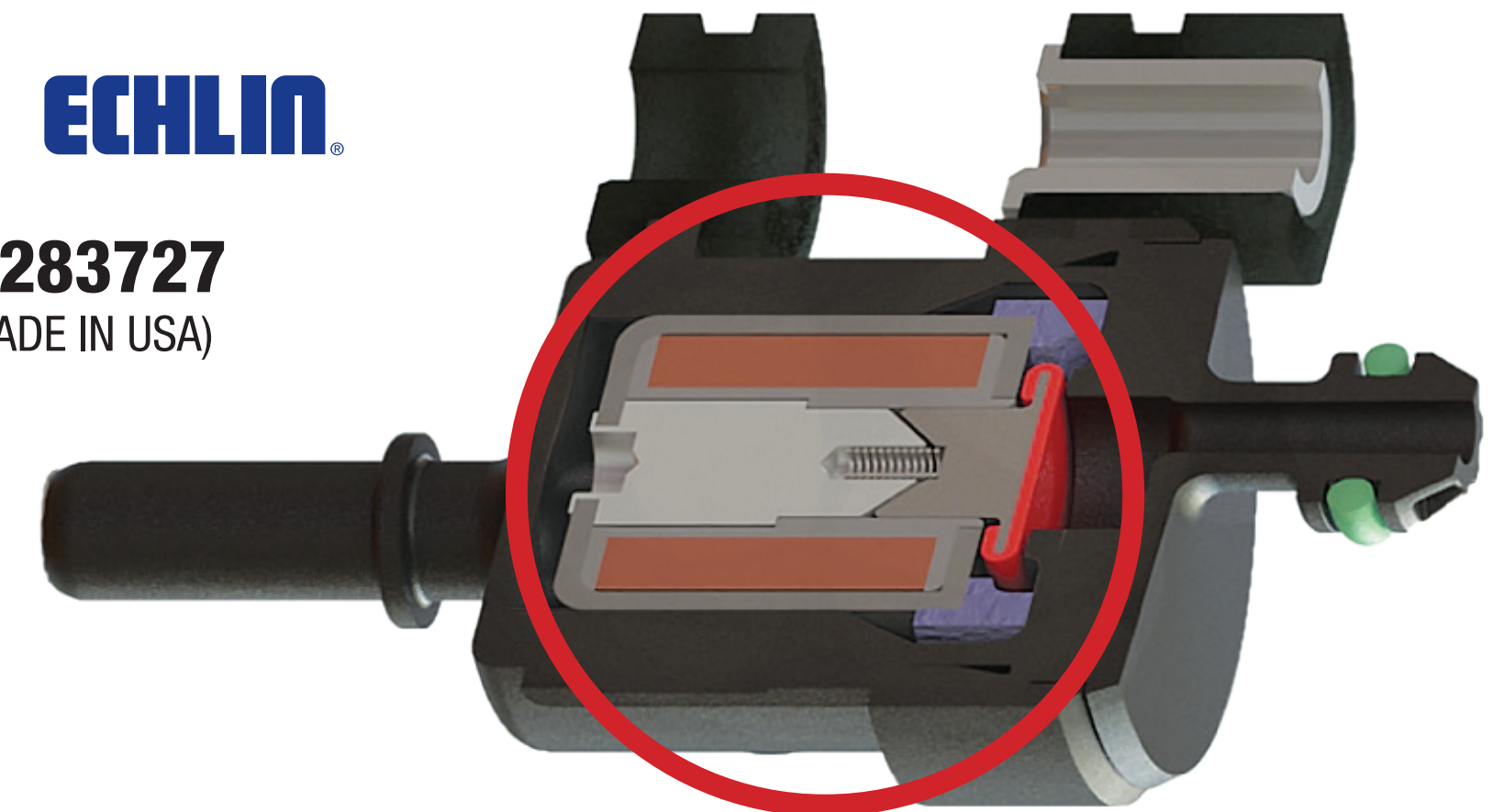
OE Problem: The plunger assembly cracks, causing a system leak



GM 55573017

Echlin® Solution: Updated plunger design improves durability

- A cylindrical design was incorporated and a bobbin was added to help maintain correct alignment
- By keeping the plunger in alignment, wear on the seal is reduced, resulting in a longer-lasting component



Special Coverage N232395300 Evaporative Emissions Purge Valve



Release Date: June 2023 Revision: 00

Attention: This Special Coverage can be seen in the Applicable Warranties section in Investigate Vehicle History (IVH).

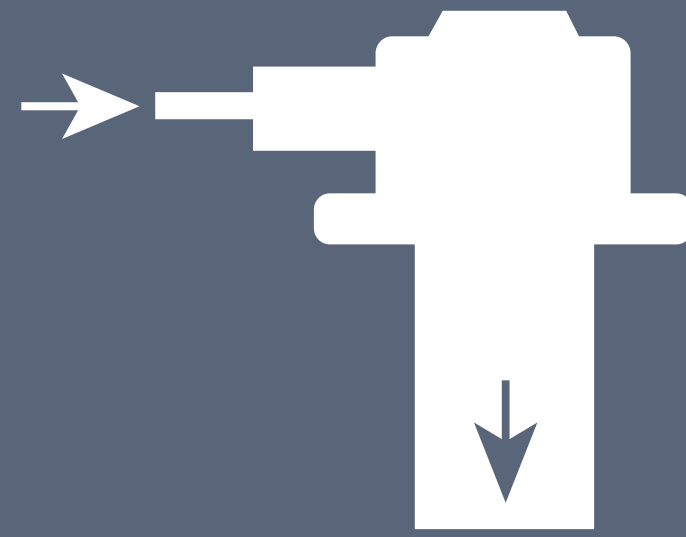
Make	Model	Model Year		RPO	Description
		From	To		
Buick	Enclave	2019	2019	LFY	ENGINE-GAS, 6 CYL, V6, 3.6L, SIDI, DOHC, ATSS, GEN 1+
Buick	Encore	2020	2020	LUV	ENGINE-GAS, 4 CYL, 1.4L, MFI, DOHC, TURBO, VVT, ALUM, GME, E85 MAX
Chevrolet	Sonic	2020	2020	LUV	ENGINE-GAS, 4 CYL, 1.4L, MFI, DOHC, TURBO, VVT, ALUM, GME, E85 MAX
Chevrolet	Traverse	2019	2019	LFY	ENGINE-GAS, 6 CYL, V6, 3.6L, SIDI, DOHC, ATSS, GEN 1+
Chevrolet	Trax	2020	2020	LUV	ENGINE-GAS, 4 CYL, 1.4L, MFI, DOHC, TURBO, VVT, ALUM, GME, E85 MAX

Involved vehicles are identified on the Applicable Warranties section in GM Global Warranty Management system. This site should always be checked to confirm vehicle involvement prior to beginning any required inspections and/or repairs.

Condition Certain 2019 model year Buick Enclave and Chevrolet Traverse vehicles equipped with a 3.6L engine (RPO LFY), and certain 2020 model year Buick Encore and Chevrolet Sonic / Trax vehicles equipped with a 1.4L engine (RPO LUV), may have a condition that could cause the evaporative emissions purge valve to not fully close. If this condition occurs, the engine could run rough, hesitate, or stall at idle speeds. Additionally, the Malfunction Indicator Light (Check Engine Light) would illuminate, and a diagnostic trouble code would be set.

GM Service Bulletin N23295300

Impact on Engine Systems



An EGR valve that is stuck open allows exhaust gases into the intake passage, resulting in low vacuum and a rough running condition



A stuck closed vent valve (normally open to the atmosphere) will make the fuel tank difficult to refill due to vapors being forced out of the filler neck, instead of going through the canister as intended



A stuck open purge valve (normally closed) will allow excessive vapors to flow into the engine, creating a "flooded" situation and the vehicle being hard to start

What's New

EVAP Components

Echlin's industry-leading, 1,250+ SKU EVAP emission catalog covers millions of repair opportunities for vehicles on the road today. Installing high-quality EVAP components is extremely important. Low-quality parts may leak and fail inspection or not integrate with the existing system properly. All Echlin® EVAP components are extensively tested so technicians can be confident they are installing the highest-quality parts.

For the most recent applications, check the online catalog at [NAPAEchlin.com](https://www.NAPAEchlin.com).



2-33047

Canister Purge Solenoid
Ford SUVs
(2025-20) VIO: 900K



2-70616

Fuel Vapor Canister
Toyota Trucks
(2021-14) VIO: 931K



2-71094

Fuel Vapor Leak Detection Pump
Jeep / Dodge SUVs
(2018-16) VIO: 782K



2-33032

Vapor Canister Purge Pump
GM Cars, Trucks & SUVs
(2025-19) VIO: 1.6M



What's New

Crankcase Emission Components

Echlin's already 600+ part crankcase emission catalog grows each year to provide technicians with a range of high-quality repair solutions. Key features of our Crankcase Breather Hoses and PCV Valves include OE-matched fittings and high-quality seals for a quick repair and long-term reliability.

For the most recent applications, check the online catalog at NAPAEchlin.com.



SEP762

Engine Oil Separator
Ford SUVs
(2024-20) VIO: 900K



2-9788

PCV Valve
Fiat / Jeep / RAM SUVs & Vans
(2023-18) VIO: 1.2M



2-603

Vacuum Hose
Ford / Lincoln Trucks, SUVs & Vans
(2023-14) VIO: 1.4M



SEP698

Engine Oil Separator
GM Trucks
(2023-17) VIO: 1M



ECHLIN

Crankcase Emission Components

NAPAEchlin.com

What's New

EGR Components

EGR systems are constantly evolving to help reduce vehicle emissions. Echlin's 980 EGR components provide repair solutions today and into the future. From EGR valves and coolers to gaskets and solenoids, Echlin® has what you need for your customers' vehicles.

For the most recent applications, check the online catalog at [NAPAEchlin.com](https://www.NAPAEchlin.com).



2-36060

EGR Valve

GM Trucks & SUVs
(2024-20) VIO: 1.9M



EGR205

EGR Cooler Gasket
Ford Trucks
(2024-11) VIO: 1.8M



2-40126

EGR Tube

Subaru Cars & SUVs
(2023-17) VIO: 976K



2-2698

EGR Cooler

Ford / Lincoln Trucks & SUVs
(2023-22) VIO: 1.1M



ECHLIN

EGR Components

NAPAEchlin.com

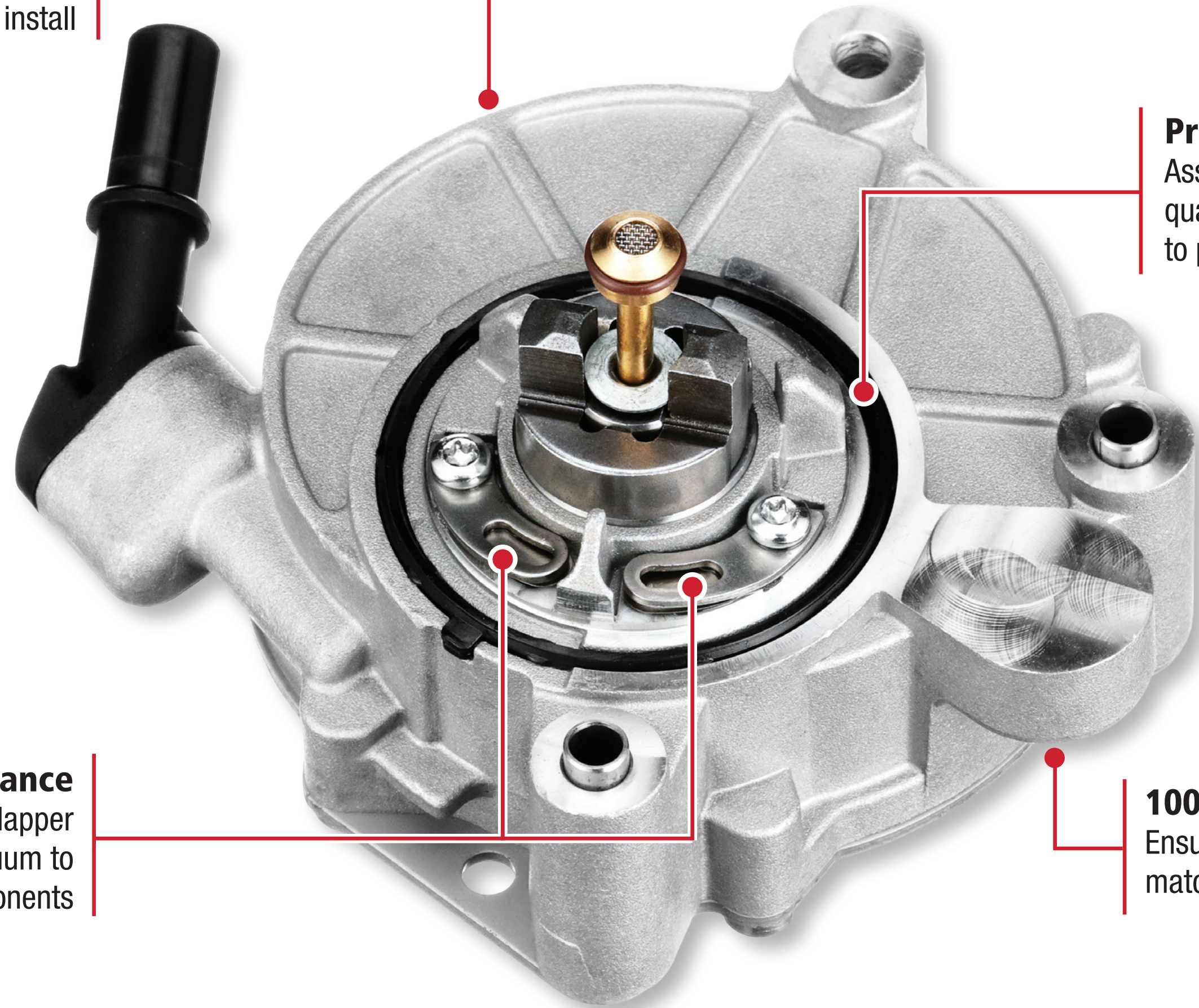
What's New

Vacuum Pumps

Vacuum pumps provide multiple key components with the vacuum they require to operate correctly. Power brake system boosters are a critical component that requires a vacuum pump to provide adequate braking force. Vacuum pumps are also required for emission solenoids and turbocharger wastegate actuators.

Easy Installation

Direct-fit OE replacement ensures ease of install



Prevents Leaks

Assembled with high-quality O-rings and seals to prevent air and oil leaks

Restores Performance

Precision-engineered flapper valve provides vacuum to critical components

100% Tested

Ensures all functions match OE specification

2-29869

Ford / Lincoln
Trucks, SUVs & Vans
(2023-13)

EVAP Components

Evaporative Emission Control Systems, also referred to as 'EVAP,' are responsible for preventing fuel vapors from escaping into the atmosphere from a vehicle's fuel system.

Echlin's EVAP components are designed to seamlessly integrate with the vehicle's computer and existing emission system, ensuring this vital system operates as intended.



Canister Purge Valves

Manufactured using high-temperature-resistant synthetic materials to maximize service life while minimizing the effect of underhood temperatures

120+ SKUs / 84M VIO



Canister Vent Valves

Extensive testing ensures performance and reliability in extreme environments

25 SKUs / 20M VIO



Canister Vent Solenoids

Our proprietary molding technology provides superior resistance to harsh environmental conditions and drastically reduces the possibility of leaks

145+ SKUs / 151M VIO



Canister Purge Solenoids

Designed to match OE specifications and seamlessly integrate with the vehicle's EVAP system

300+ SKUs / 202M VIO

EVAP Components

Echlin® utilizes the highest-quality material and manufacturing processes to ensure that all EVAP components meet OE specifications and operation requirements.

Our engineers design every part so they can easily be installed and trusted by technicians to function exactly as the OE manufacturer intended.



Fuel Vapor Canisters

Manufactured with the highest-grade materials for prolonged life and superior performance

600+ SKUs / 247M VIO



Fuel Vapor Leak Detection Pumps

Direct-fit OE replacements accurately detect evaporative leaks with the utilization of engine vacuum

70+ SKUs / 48M VIO



ESIM (Evaporative System Integrity Module)

Designed and tested to accurately detect pressure change and provide corresponding voltage information to the vehicle's PCM

5 SKUs / 23M VIO

*ESIMs are a type of leak detection pump designed by Chrysler. These components use two weights, a diaphragm, and a switch to detect pressure differences across a variety of conditions.

Top Movers: EVAP Components

IMPORT APPLICATIONS



2-282647

Canister Vent Solenoid
Nissan / Infiniti
Cars, Trucks, SUVs & Vans
(2024-03)



2-283735

Canister Purge Solenoid
Toyota / Lexus / Scion / Mazda
Cars, Trucks & SUVs
(2022-06)



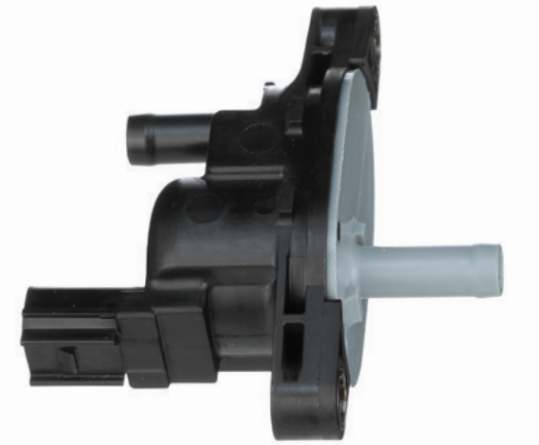
2-284043

Canister Purge Solenoid
Toyota / Lexus
Cars, Trucks & SUVs
(2023-14)



2-71067

Fuel Vapor Leak Detection Pump
Toyota / Suzuki
Cars, Trucks & SUVs
(2014-04)



2-283753

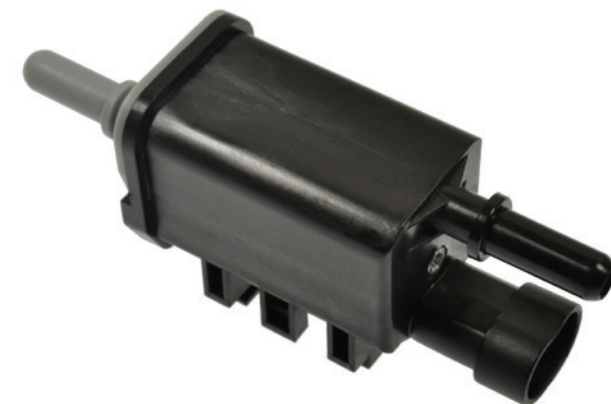
Canister Purge Solenoid
Honda / Acura
Cars, Trucks & SUVs
(2017-06)

DOMESTIC APPLICATIONS



2-283727

Canister Purge Solenoid
GM
Cars, Trucks & SUVs
(2020-09)



2-282571

Canister Purge Solenoid
GM
Cars, Trucks, SUVs & Vans
(2020-03)



2-283993

Canister Purge Solenoid
Ford / Lincoln
Cars, Trucks, SUVs & Vans
(2021-11)



2-282570

Canister Purge Solenoid
GM
Cars, Trucks, SUVs & Vans
(2014-04)



2-284016

Canister Purge Valve
GM
Cars & SUVs
(2021-11)



ECHLIN

EVAP Components

NAPAEchlin.com

Precision Engineering

Evaporative System Integrity Modules (ESIM), also known as Evaporative System Integrity Monitors, are a key EVAP component on many late-model Chrysler, Dodge, Jeep, RAM and Fiat vehicles. Unlike previous leak detection systems, ESIMs do not contain a solenoid. Instead, ESIMs use two weights, a diaphragm and a switch to detect pressure differences across a variety of conditions.

Echlin® Evaporative System Integrity Module



Made in USA
Manufactured in SMP's Greenville, SC facility for quality control

Peak Conductivity
OE-matched connector fits the factory engine wiring harness

Durability
Designed with a temperature-resistant synthetic housing for durability

Accuracy
Calibrated internal diaphragm and spring open and closed to provide accurate voltage readings to the switch

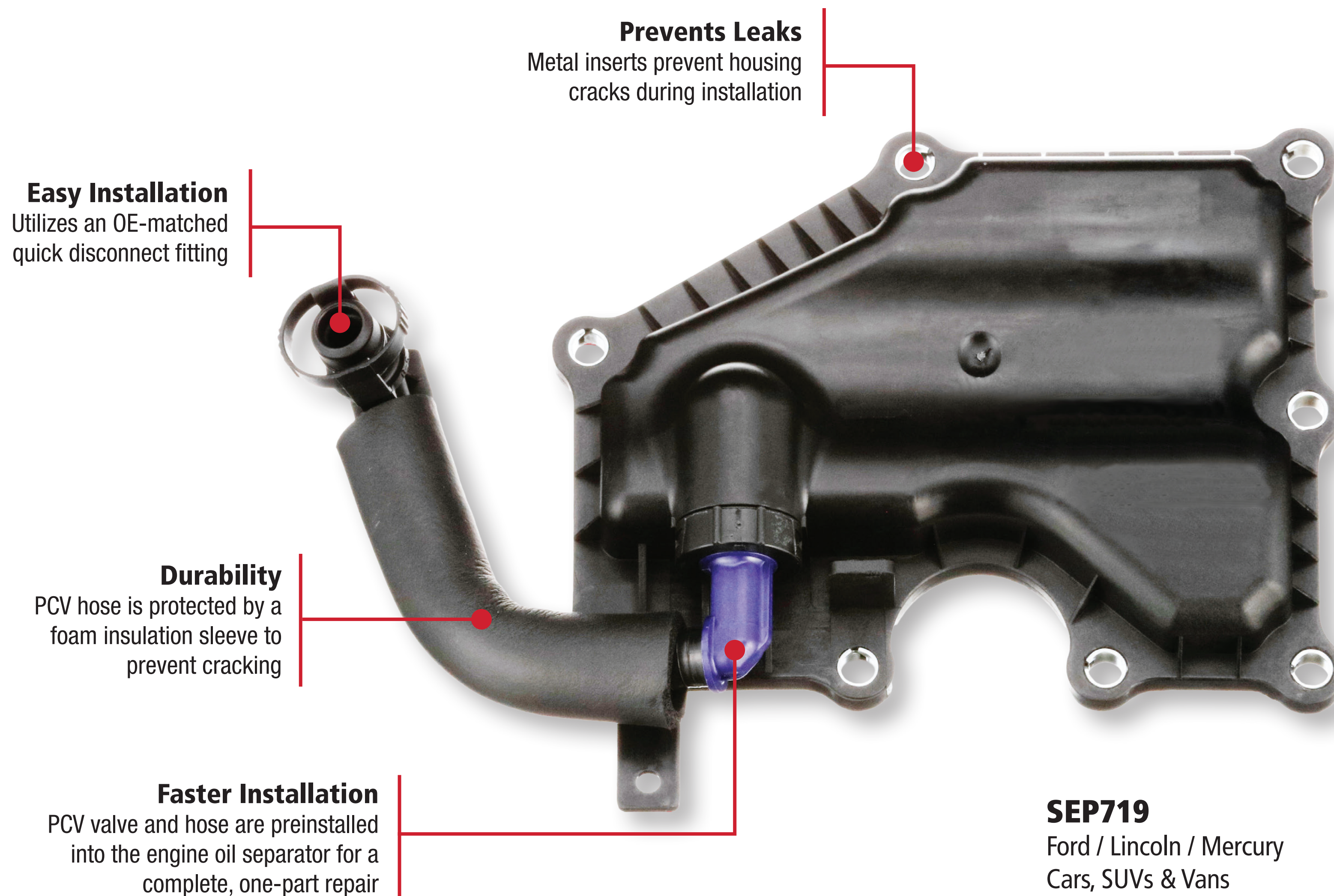
O-Ring Included
Included O-ring allows for a leak-free, complete repair

2-71013
Chrysler / Dodge / Jeep / RAM
Cars, Trucks & SUVs
(2021-07)

Precision Engineering

Engine oil separators stop oil from recirculating into the cylinders, preventing carbon buildup. Excessive carbon on valves and pistons can cause driveability issues and may lead to major repairs. Echlin® Engine Oil Separators are engineered and tested to keep engines operating efficiently.

Echlin® Engine Oil Separator



SEP719
Ford / Lincoln / Mercury
Cars, SUVs & Vans
(2022-08)

Crankcase Emission Components

Echlin's 600+ Crankcase Emission Components are designed, manufactured, and tested to ensure that the vehicle maintains long-term reliability, performance, and fuel economy.

Did You Know

Many forced-induction vehicles rely on the PCV valve to protect internal engine components. Under heavy load, a failed PCV valve will allow positive pressure into the crankcase, possibly damaging the vital seals inside of it.



PCV Valves

Reroutes crankcase gases to the intake where they are burned in the combustion process

360+ SKUs / 197M VIO



PCV Grommets

Manufactured using high-quality synthetic materials to resist breakdown from heat and promote a long-lasting seal around the PCV valve

20+ SKUs / 11M VIO



Engine Oil Separators

Designed to reduce carbon buildup and maintain engine efficiency by separating oil from recirculating crankcase gases

55+ SKUs / 33M VIO



Engine Crankcase Breather Hoses

Constructed using temperature-resistant materials and OE-style fittings to ensure easy install and proper function

135+ SKUs / 118M VIO



Crankcase Ventilation Filters

Engineered and tested to match OE filtration specifications

15+ SKUs / 8M VIO



ECHLIN

Crankcase Emission Components

NAPAEchlin.com

Top Movers: Crankcase Emission Components

IMPORT APPLICATIONS



2-9651
PCV Valve
Hyundai / Kia
Cars & SUVs
(2023-07)



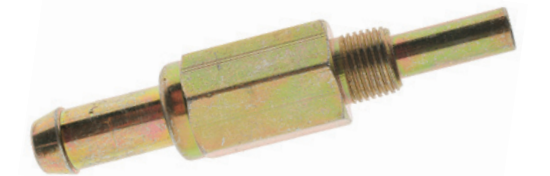
2-9541
PCV Valve
Nissan
Cars, Trucks, SUVs & Vans
(2020-02)



2-9709
PCV Valve
Honda / Acura
Cars & SUVs
(2019-13)



2-9520
PCV Valve
Honda / Acura
Cars, Trucks & SUVs
(2019-03)



2-9496
PCV Valve
Multiple Applications
(2019-80)

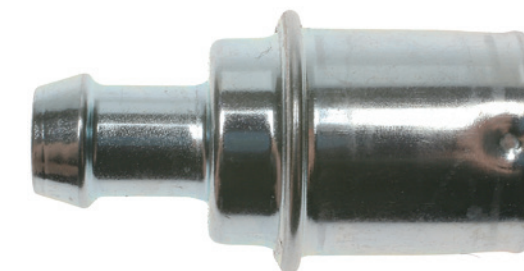
DOMESTIC APPLICATIONS



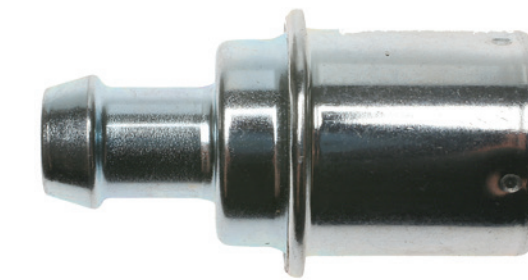
2-9210
PCV Valve
GM
Cars, Trucks, SUVs & Vans
(1999-70)



2-9627
PCV Valve
Chrysler / Dodge / Jeep / RAM
Cars, SUVs & Vans
(2020-07)



2-9397
PCV Valve
Ford / Lincoln
Trucks, SUVs & Vans
(2004-97)



2-9220
PCV Valve
GM
Cars, Trucks, SUVs & Vans
(2012-70)



2-9688
PCV Valve Elbow
GM
Cars & SUVs
(2023-04)



ECHLIN

Crankcase Emission Components

NAPAEchlin.com

EGR Program

Echlin's nearly 1,000 part EGR catalog offers a wide selection of high-quality replacement parts ranging from EGR Valves to hoses and switches, as well as repair kits and Pressure Feedback Sensors.

Echlin® EGR components are subject to stringent testing and validation processes which ensure long-term durability, reliability and service life.



EGR Valves

Built from industrial-grade materials for durability and calibrated to ensure precise operation

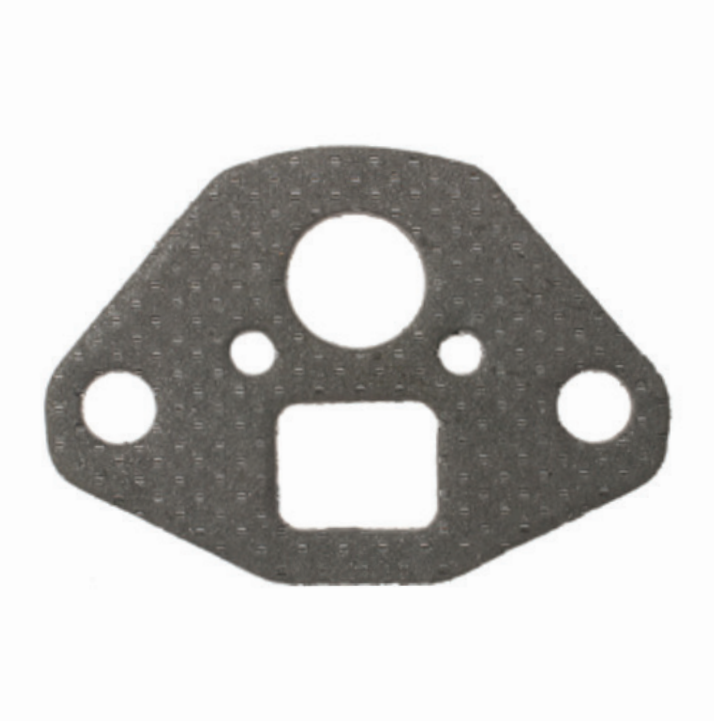
600+ SKUs / 92M VIO



EGR Control Solenoids

Made with the finest components including multiple precious metal contacts and polymer thick film resistors

70+ SKUs / 30M VIO



EGR Valve Mounting Gasket

Designed and manufactured using application-specific, heavy-duty materials to seal against extreme EGR temperatures

185+ SKUs / 88M VIO

Echlin's offering of EGR Emission Products also includes:

EGR Delay Valves

EGR Tubes

EGR Pressure Feedback Hoses

EGR Valve Control Solenoid Filters

EGR Repair Kits

...and much more

EGR Time Delay Control Switches

Top Movers: EGR Components

IMPORT APPLICATIONS



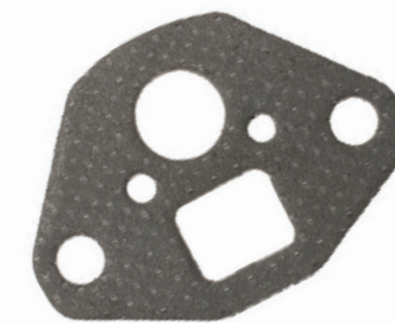
2-26684

EGR Valve
Mazda / Ford
Cars, SUVs & Vans
(2023-03)



2-26653

EGR Valve
Mazda / Ford / Mercury
Cars & SUVs
(2006-01)



2-2520

EGR Valve Mounting Gasket
Multiple Applications
(2019-72)



2-26793

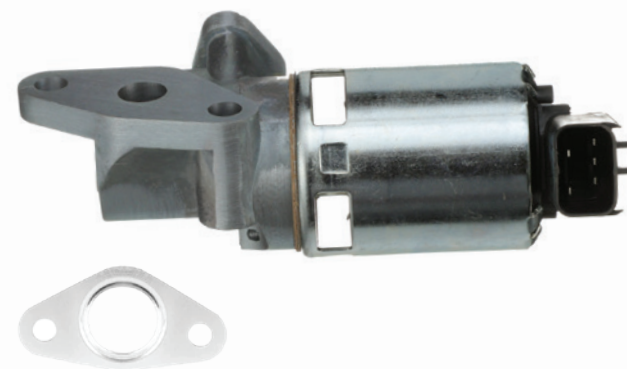
EGR Valve
Honda / Acura
Cars, Trucks & SUVs
(2020-08)



2-26333

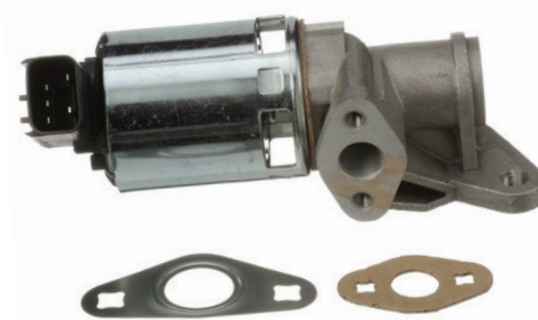
EGR Valve
Honda / Acura
Cars, Trucks & SUVs
(2010-97)

DOMESTIC APPLICATIONS



2-26809

EGR Valve
Chrysler / Dodge / Jeep
SUVs
(2011-07)



2-26486

EGR Valve
Chrysler / Dodge / Jeep
Cars, Trucks & SUVs
(2010-03)



2-3001

EGR Valve
Ford / Lincoln / Mercury
Cars, Trucks, SUVs & Vans
(2011-95)



2-36000

EGR Valve
GM
Trucks & SUVs
(1995-87)



2-26154

EGR Valve
GM
Cars, Trucks, SUVs & Vans
(2005-93)

Precision Engineering

Every Echlin® EGR Valve is manufactured and calibrated for precise performance. To ensure trouble-free operation, each one must pass comprehensive quality testing including computer-controlled bench testing for resistance, leakage, and response and flow rates.

Echlin® EGR Valve

Durability
Stainless steel valve components ensure long-lasting operation

Corrosion-Resistant
Anti-rust coating provides additional protection against harsh elements

Peak Conductivity
OE-matched connector fits the factory engine wiring harness

2-26684
Ford / Mercury / Mazda
Cars, SUVs & Vans
(2023-03)



Easy Installation
Includes EGR gaskets for a comprehensive and complete repair

Precision Manufacturing in the USA

Popular emission components such as ESIMs and Canister Purge Solenoids are manufactured in the USA at our Greenville, SC and Independence, KS facilities. Many other key emissions components are designed and manufactured at our Reynosa, Mexico facility, helping to maintain a strong North American manufacturing footprint. This allows us to completely control the manufacturing process from raw materials all the way to a finished part, ensuring your customers receive a 100% tested and approved quality component.

SMP USA Emission Control Manufacturing Facilities

Popular Categories Made in USA:

- Canister Purge Valves
- Canister Vent Valves
- Canister Purge Solenoids
- Canister Vent Solenoids
- Leak Detection Pumps
- ESIMs
- PCV Valves



Independence, KS 



 **Greenville, SC**

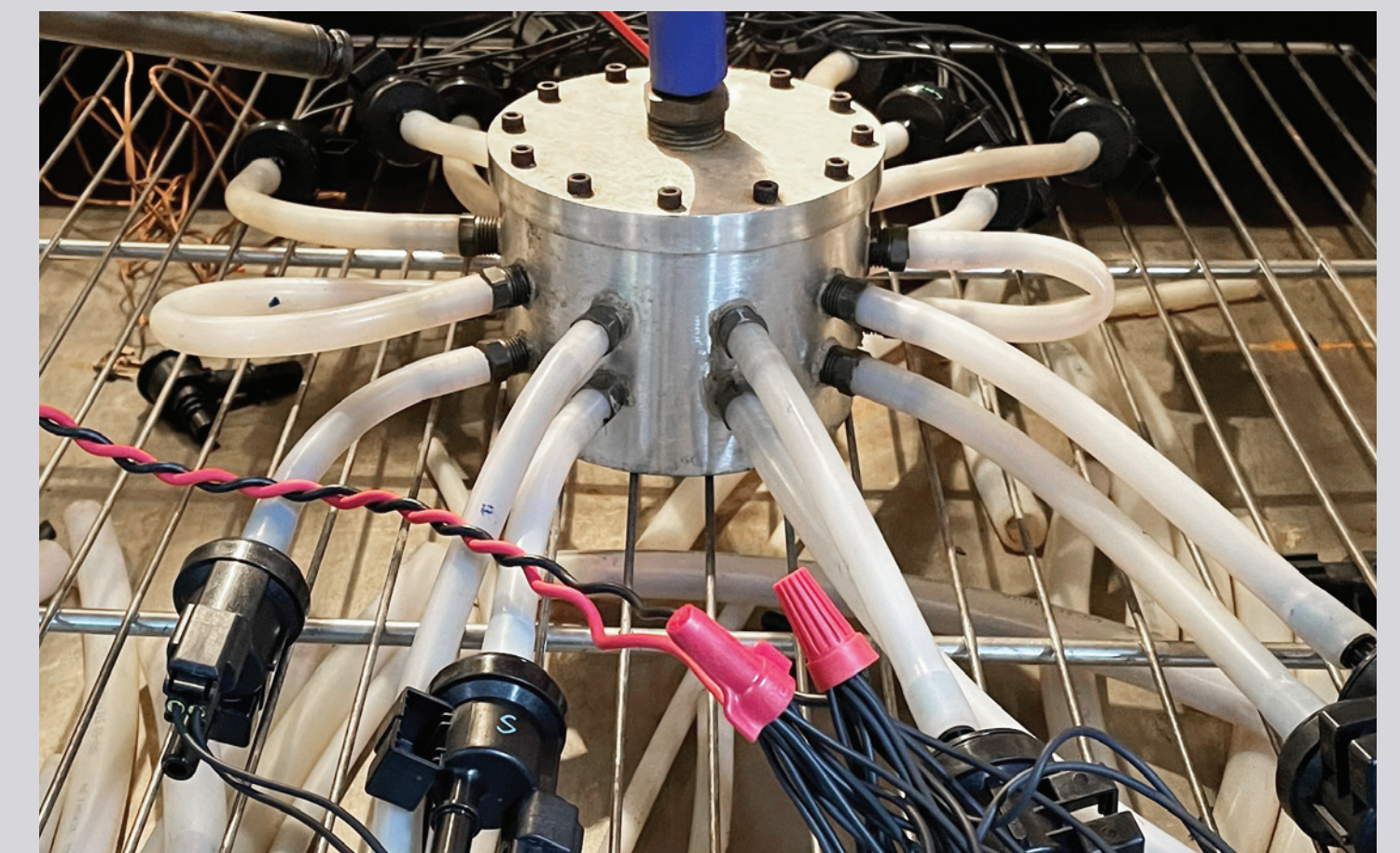
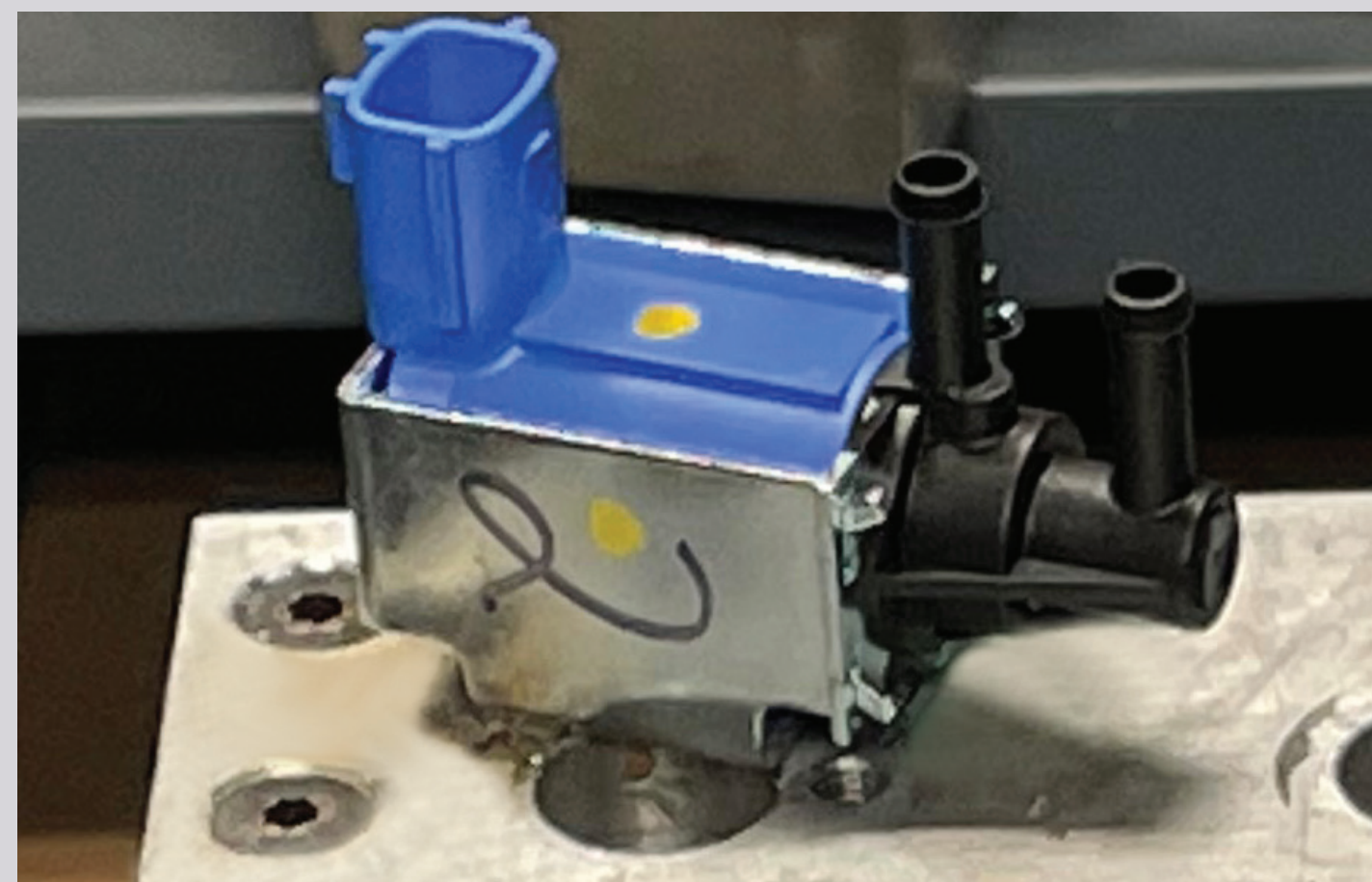
Testing and Validation

All Echlin® emission components undergo extensive testing, examination, and product validation. Performance benchmarking, product life-cycle testing, and end-of-line testing ensures that each part meets OE quality and operation.

Every testing process, while varying, remains thorough. For example, Echlin® Canister Purge Solenoids are subject to extreme condition tests including accelerated wear, thermal cycling, thermal shock, salt fog, vibration, and drop testing.



Echlin® Emission Control products undergo on-vehicle testing at our Irving, TX facility.



Canister Purge Solenoids undergoing vibration testing (left) and thermal cycle testing (right) at our Independence, Kansas facility.

Echlin® Pro Training Tech Tip

As experienced ASE-certified automotive technicians themselves, Echlin® Pro Trainers are experts in emission systems.

Here's what they say to look out for during an emission system service.



After an EVAP system is repaired, it is important to verify the repair by running a self test and verifying that no DTCs have returned (this might not be possible for some small EVAP leak codes)



Crankcase breather systems on newer vehicles are now monitored and can set DTCs. Some of these components are labor intensive to access, so it is effective to replace them while other components are removed (starter, transmission, turbo, etc.)



Without a DTC, EVAP leaks can be difficult to find. Using a smoke machine to fill the system and find leaks is an excellent way to diagnose a problem



ECHLIN

Emission Control Program

NAPAEchlin.com

Echlin® Professional Training

**Award-Winning In-Person, Live
Virtual, and Online Learning**

Echlin® Pro Training delivers accredited classes that educate technicians in the latest automotive repair technologies, and techs can earn CEU credits.

An extension of Echlin® training, our extensive YouTube video library has over 500 technical and installation videos.



Available Classes

- Chrysler EVAP Tips and Tricks
- Diagnosing Catalytic Converter Codes
- Diagnosing Secondary AIR Injection Systems
- EVAP System Diagnosis
- Lean Engine Diagnosis
- Misfire Diagnostics
- Rich Engine Diagnosis



Available Classes

- Advanced Engine Mechanical Diagnostics
- EVAP Diagnostics
- Ford Gas Vehicle Update
- GM Engine Controls
- Keeping It Clean - Emission Diagnostics and Repair
- Misfire Diagnosis
- Nissan / Infiniti Diagnosis



ECHLIN

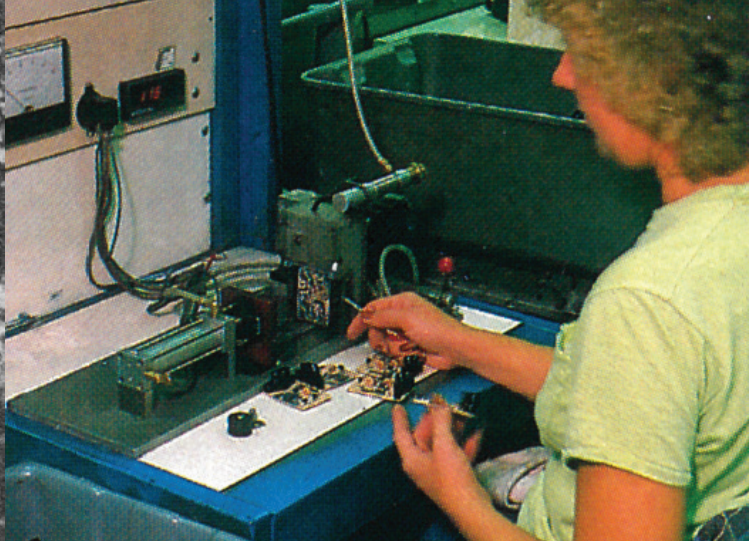
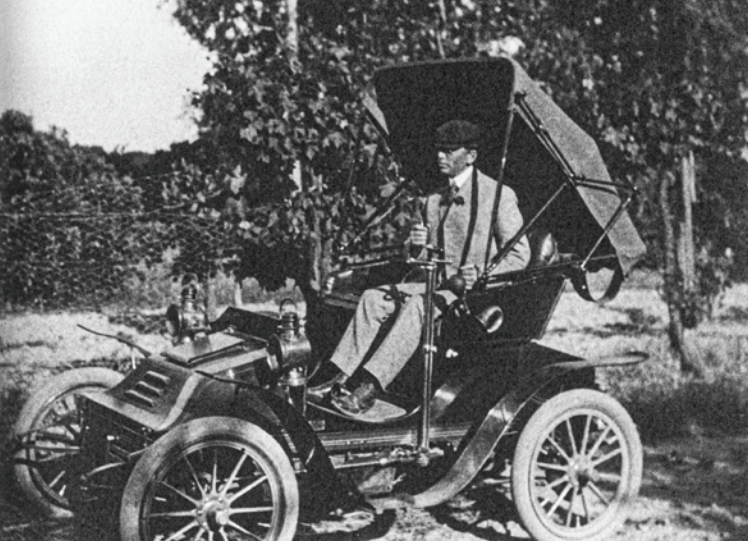
Emission Control Program

NAPAEchlin.com

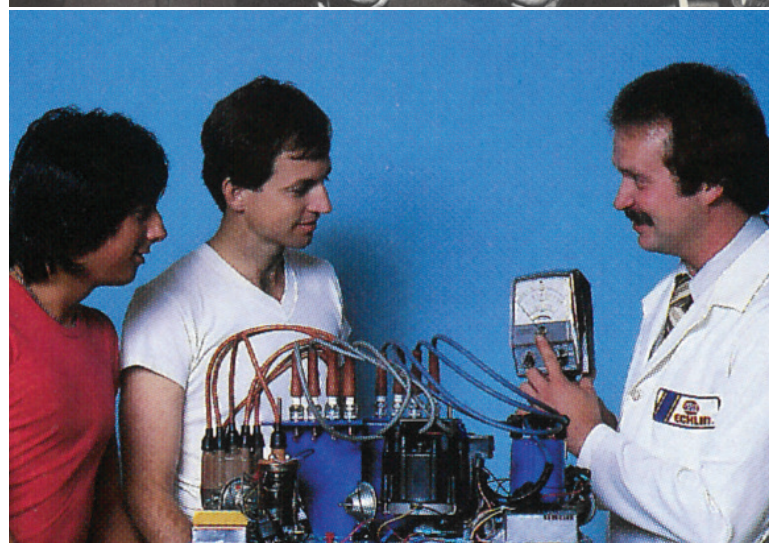
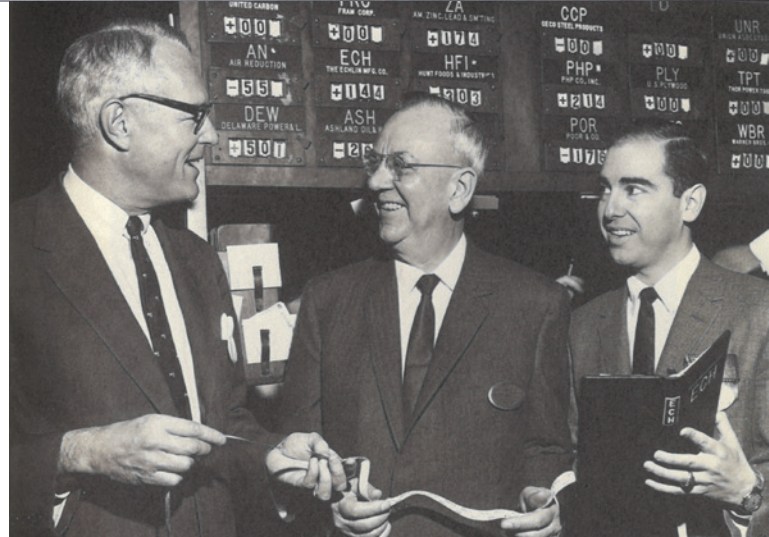
100 Years of Excellence

For 100 years, marketing support materials and advertisements have been created to build Echlin® into a well-known, trusted, and reputable national brand.

Building brand loyalty and recognition with professional technicians takes decades. For 100 years, Echlin® has been supporting NAPA® with national advertising campaigns and more recently, effective technical training programs. Most importantly, the Echlin® brand has endured because generations of professional technicians know they can trust what's in the box.



ECHLIN®
100
YEARS OF EXCELLENCE



Visumatic...
 a multi-purpose business system

FOR BRINGING IN REPEAT BUSINESS

When you finish a brake job, you can proudly say, "Mr. Morgan, I am an independent. Free to buy the best parts made, I installed United Brake Parts. I took pains to replace every part needed to give you safe, trouble-free performance. I am proud of what I did for you."

"I INSTALLED UNITED BRAKE PARTS... AND I DID A FIRST CLASS JOB!"

Visumatic... FOR BRINGING IN REPEAT BUSINESS

