



CheckThePart.com

-  **Open the Box**
-  **Inspect the Part**
-  **Verify the Return**

memo.
Aftermarket Suppliers

Endorsed by
MEMA Aftermarket

autocare[®]
ASSOCIATION
Independence drives us.

Endorsed by the
Auto Care Association

Return Guide for **Oil Filter Housings**

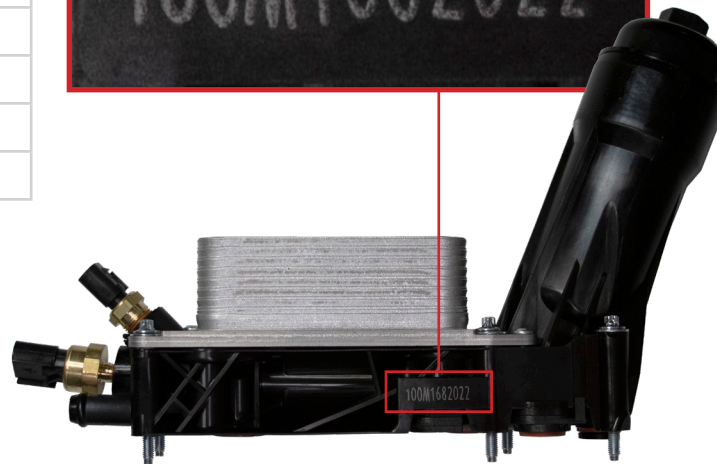
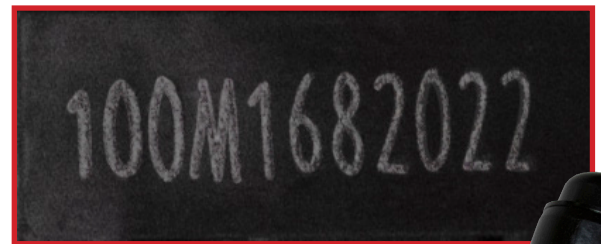
We know it can be difficult to determine if a return is valid. These simple tips will make it easier for you to decide which warranty claims are valid, and which are not.

ALWAYS Open the Box and Check the Part

- Confirm the brand of the part in the box matches the brand on the box. Tech Expert[®] by NAPA[®] Echlin[®] Oil Filter Housings will have a laser etched code on the side of the body. The first 3 digits represent the part number and the last four digits represent the year the part was made.

PN	Code
EOF100	100XX20XX
EOF101	101XX20XX
EOF103	103XX20XX
EOF104	104XX20XX
EOF111	111XX20XX
EOF136	136XX20XX

- Check to see if the part is only missing gaskets or hardware. If the part is new and only missing hardware, you can order new hardware and put the part back into inventory.
- If the housing was over-torqued and cracked during installation, it can be denied as a warranty claim.



Sponsored by:

